

FOR LEASE



PYME
PARQUE INDUSTRIAL

INDUSTRIAL BUILDINGS FOR LEASE



75 KVAs

595 m²

Contact us:

👤 Pedro Mercado

☎ +52 (442) 464 0816

✉ pedromercadopena@gmail.com

🌐 tbq.mx

🌐 parqueindustrialpyme.com.mx

Developed by



595 m²



BUILDING INFORMATION

LAND AREA

594.80 m²
6402.37 ft²

BUILDING AREA

594.80 m²
6402.37 ft²

SKYLIGHTS

10% Natural
lighting

CLEAR HEIGHT

9.8 m

DOCKS

1

PARKING LOT

FLOOR THICKNESS

15 cm concrete
MR 35

WALL MATERIAL

Panel

ROOF MATERIAL

KR 18 sheet with 3"
thermoacoustic
insolation mat

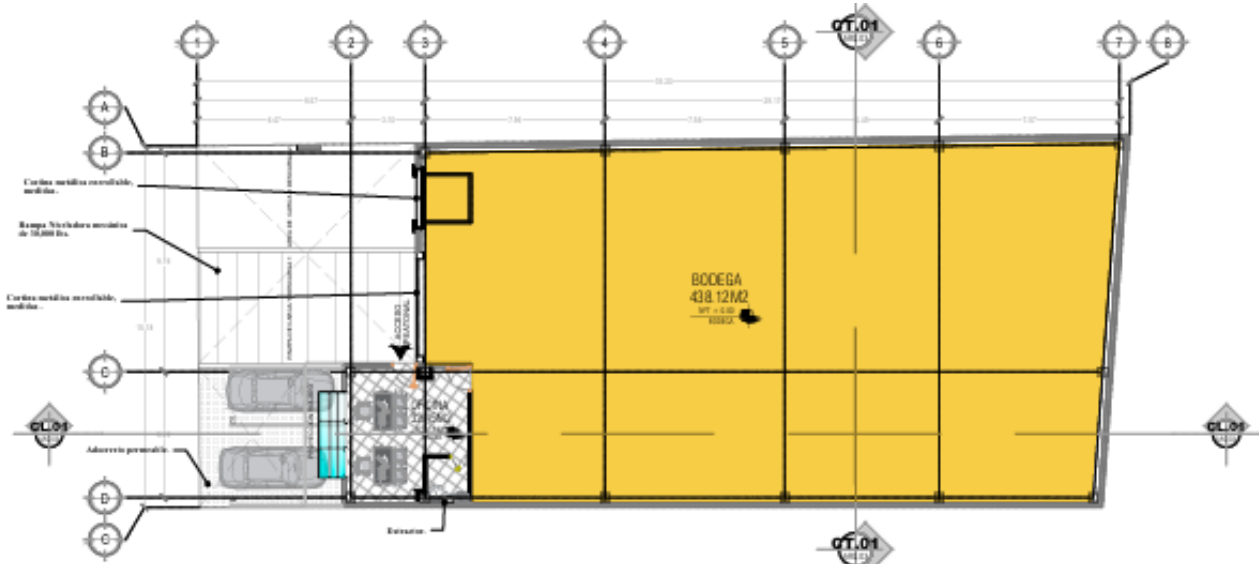
RAMPS

1

KVAs ENERGY POWER

75 KVAs

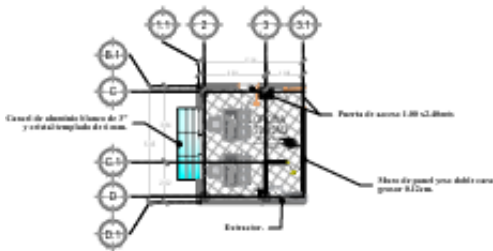
BUILDING LAYOUT



PLANTA GENERAL ARQUITECTÓNICA

ARQUITECTÓNICO

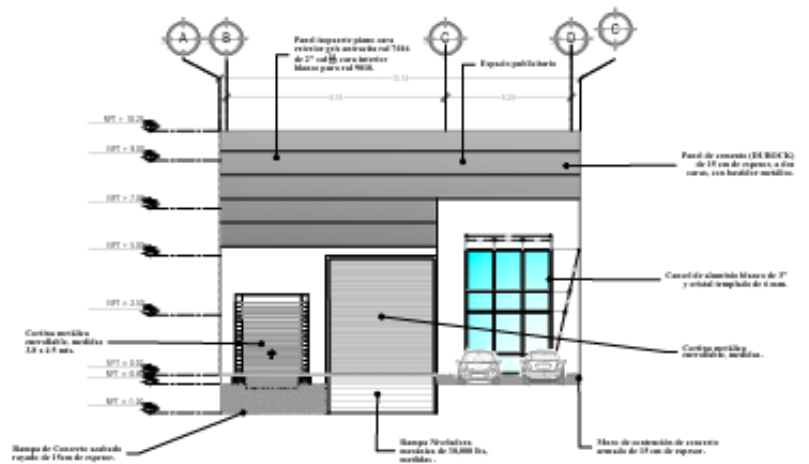
ESCALA 1:100



PLANTA BAJA OFICINAS

ARQUITECTÓNICO

ESCALA 1:200



FACHADA PRINCIPAL

ARQUITECTÓNICO

ESCALA 1:100

ADVANTAGES

Parque Industrial Pyme



Electrical substation

More than 200,000
KVAS in Phase 1



Natural gas

Engie's main pipeline



Immediate property title transfer



Labor force

Communities around
pyme industrial park



PYME Settlers Association

- Surveillance 24/7.
- 38 CCTV Cameras.
- Green area maintenance.
- Streets signage, painting and maintenance.



PARK INFRASTRUCTURE



Electrical substation



Fire fighting equipment



Natural gas



Carriers



Security



Convenience stores



Water wells



Water treatment plant



Restaurant



Medical attention



**Settlement Association
Parque industrial PyME**



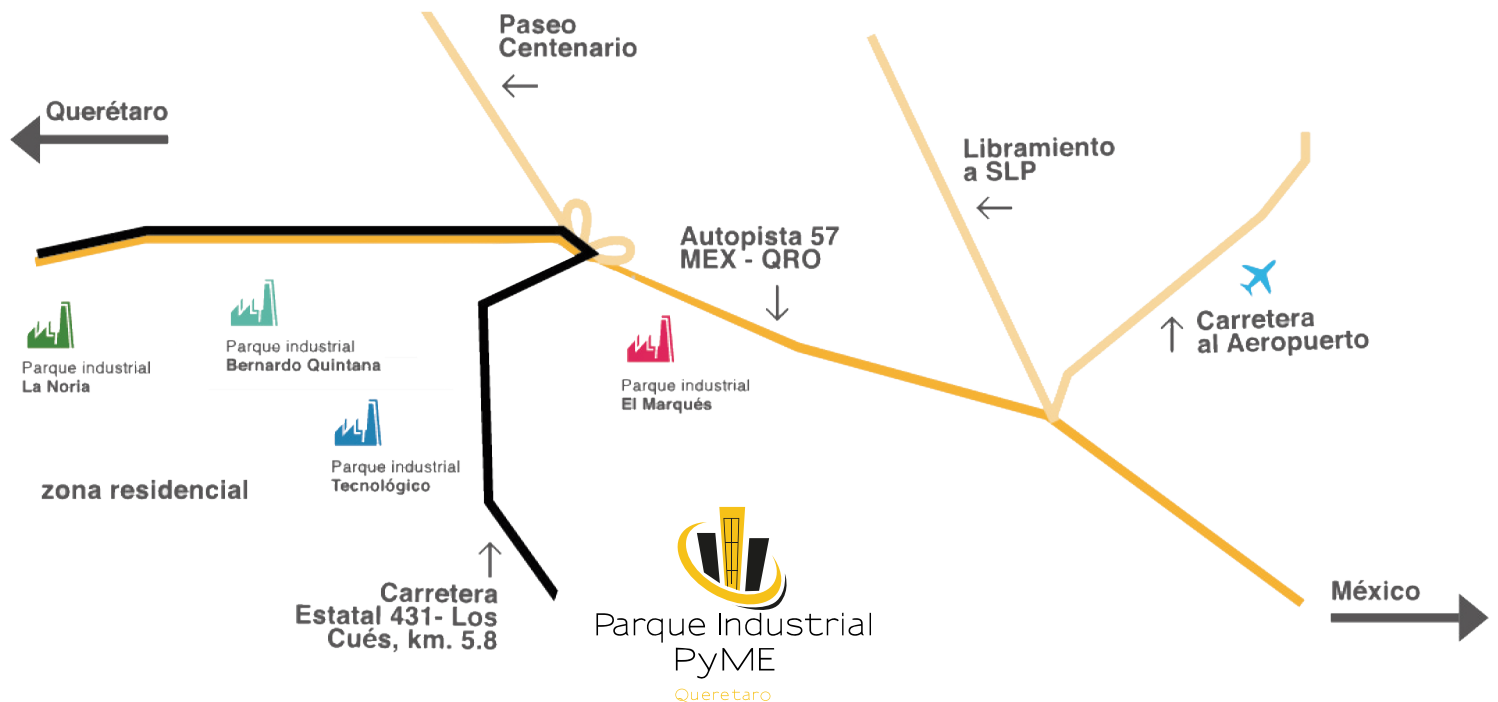
**Click to go
to the virtual tour**

MASTER PLAN



LOCATION

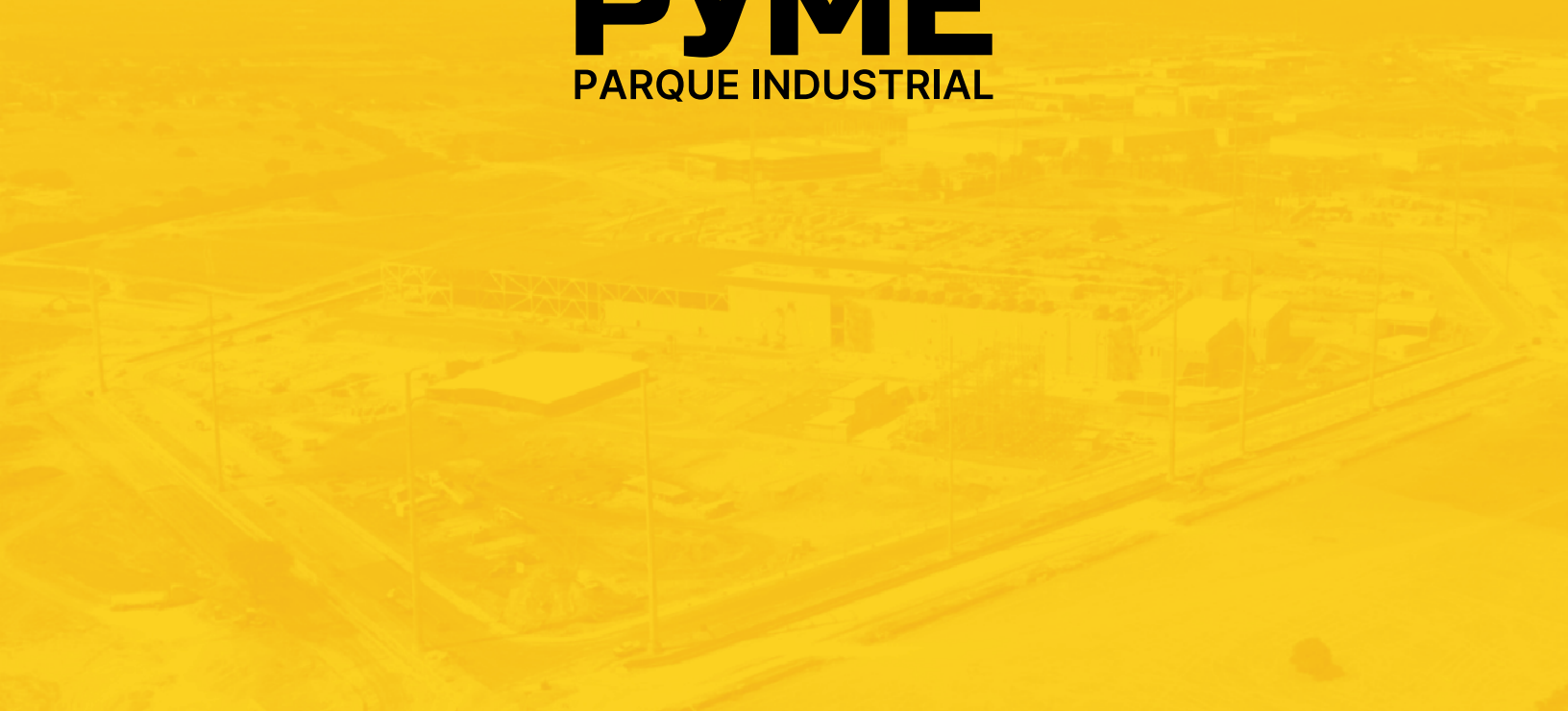
[Click to go to the Google Maps location](#)





PYME

PARQUE INDUSTRIAL



 tbq.mx
 parqueindustrialpyme.com.mx

Developed by

